

Postal Code 78725

Residential Statistics



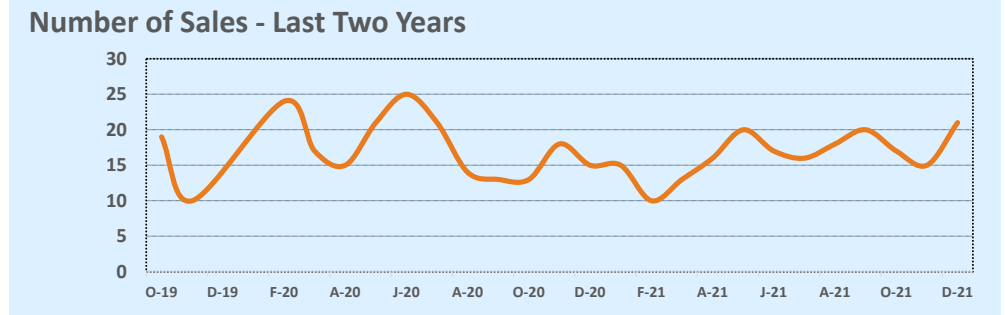
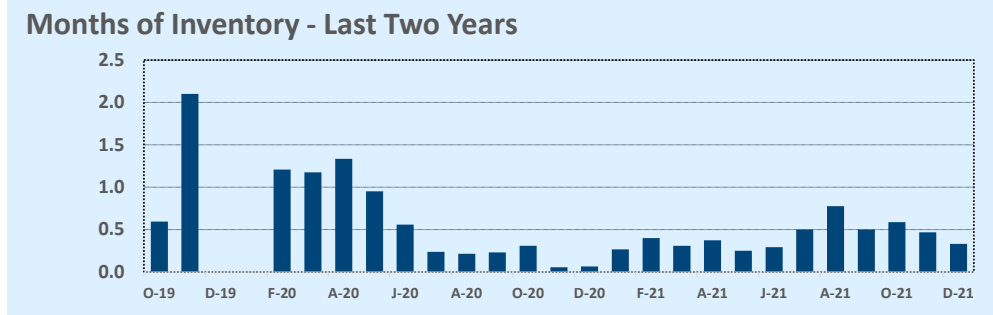
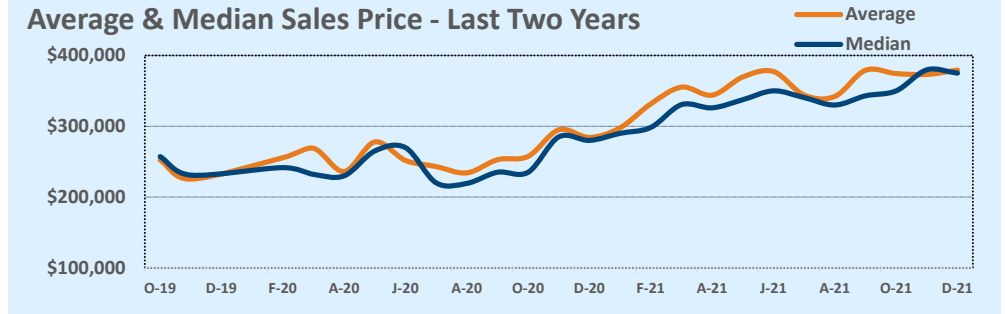
November 2021

Listings	This Month			Year-to-Date		
	Nov 2021	Nov 2020	Change	2021	2020	Change
Single Family Sales	19	15	+26.7%	169	190	-11.1%
Condo/TH Sales	2	--	--	29	16	+81.3%
Total Sales	21	15	+40.0%	198	206	-3.9%
New Homes Only	--	3	--	6	54	-88.9%
Resale Only	21	12	+75.0%	192	152	+26.3%
Sales Volume	\$7,966,612	\$4,262,281	+86.9%	\$70,884,217	\$53,206,008	+33.2%
New Listings	11	8	+37.5%	213	192	+10.9%
Pending	8	7	+14.3%	16	196	-91.8%
Withdrawn	2	--	--	8	8	--
Expired	--	--	--	--	--	--
Months of Inventory	0.3	0.1	+400.0%	N/A	N/A	--

Price Range	This Month			Year-to-Date		
	New	Sales	DOM	New	Sales	DOM
\$149,999 or under	--	--	--	--	--	--
\$150,000- \$199,999	--	--	--	1	--	--
\$200,000- \$249,999	--	--	--	4	2	134
\$250,000- \$299,999	--	1	19	55	36	11
\$300,000- \$349,999	6	8	11	71	74	8
\$350,000- \$399,999	3	3	6	40	40	9
\$400,000- \$449,999	--	6	7	24	23	11
\$450,000- \$499,999	1	2	21	7	10	12
\$500,000- \$549,999	1	1	6	3	5	13
\$550,000- \$599,999	--	--	--	8	5	8
\$600,000- \$699,999	--	--	--	--	3	5
\$700,000- \$799,999	--	--	--	--	--	--
\$800,000- \$899,999	--	--	--	--	--	--
\$900,000- \$999,999	--	--	--	--	--	--
\$1M - \$1.99M	--	--	--	--	--	--
\$2M - \$2.99M	--	--	--	--	--	--
\$3M+	--	--	--	--	--	--
Totals	11	21	10	213	198	11

Average	This Month			Year-to-Date		
	Nov 2021	Nov 2020	Change	2021	2020	Change
List Price	\$367,062	\$275,565	+33.2%	\$336,831	\$257,236	+30.9%
List Price/SqFt	\$236	\$162	+45.4%	\$219	\$160	+36.8%
Sold Price	\$379,362	\$284,152	+33.5%	\$358,001	\$258,282	+38.6%
Sold Price/SqFt	\$245	\$169	+45.2%	\$232	\$161	+44.5%
Sold Price / Orig LP	103.0%	107.6%	-4.3%	106.1%	100.8%	+5.2%
Days on Market	10	18	-43.6%	11	28	-61.1%

Median	This Month			Year-to-Date		
	Nov 2021	Nov 2020	Change	2021	2020	Change
List Price	\$345,000	\$273,068	+26.3%	\$319,225	\$242,500	+31.6%
List Price/SqFt	\$233	\$156	+49.0%	\$217	\$151	+43.6%
Sold Price	\$375,000	\$280,000	+33.9%	\$335,000	\$241,500	+38.7%
Sold Price/SqFt	\$238	\$171	+39.1%	\$236	\$152	+55.8%
Sold Price / Orig LP	102.0%	102.0%	+0.0%	105.0%	100.0%	+5.0%
Days on Market	6	4	+50.0%	5	7	-28.6%



Based on information from the Austin Board of REALTORS® (alternatively, from ACTRIS). Neither the Board nor ACTRIS guarantees or is in any way responsible for its accuracy. The Austin Board of REALTORS®, ACTRIS and their affiliates provide the MLS and all content therein "AS IS" and without any warranty, express or implied. Data maintained by the Board or ACTRIS may not reflect all real estate activity in the market.